

12 MAPS OF BUILDING

UPPER FLOOR



Fellowship Hall: Reception and/or meeting space

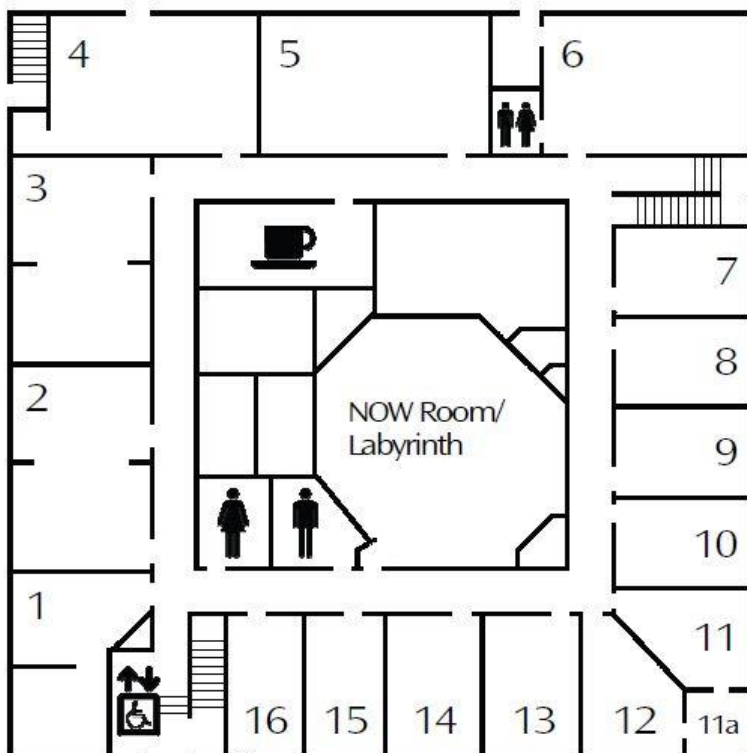
Worship Hall: Sanctuary. No food or drink here please (water is OK)

Lounge: Can be used for meetings

Staff Offices

Lower Level Floor Plan

September, 2010



Room 1: Music Room and Music Director's Office

Rooms 2, 3, 4, 6: Large classrooms, can hold up to 30 persons

Rooms 5, 7, 8, 9, 10: Office space leased to non-profits

Rooms 13 through 16: small classrooms that can hold up to 10 persons

NOW Room: can hold up to 65 persons.