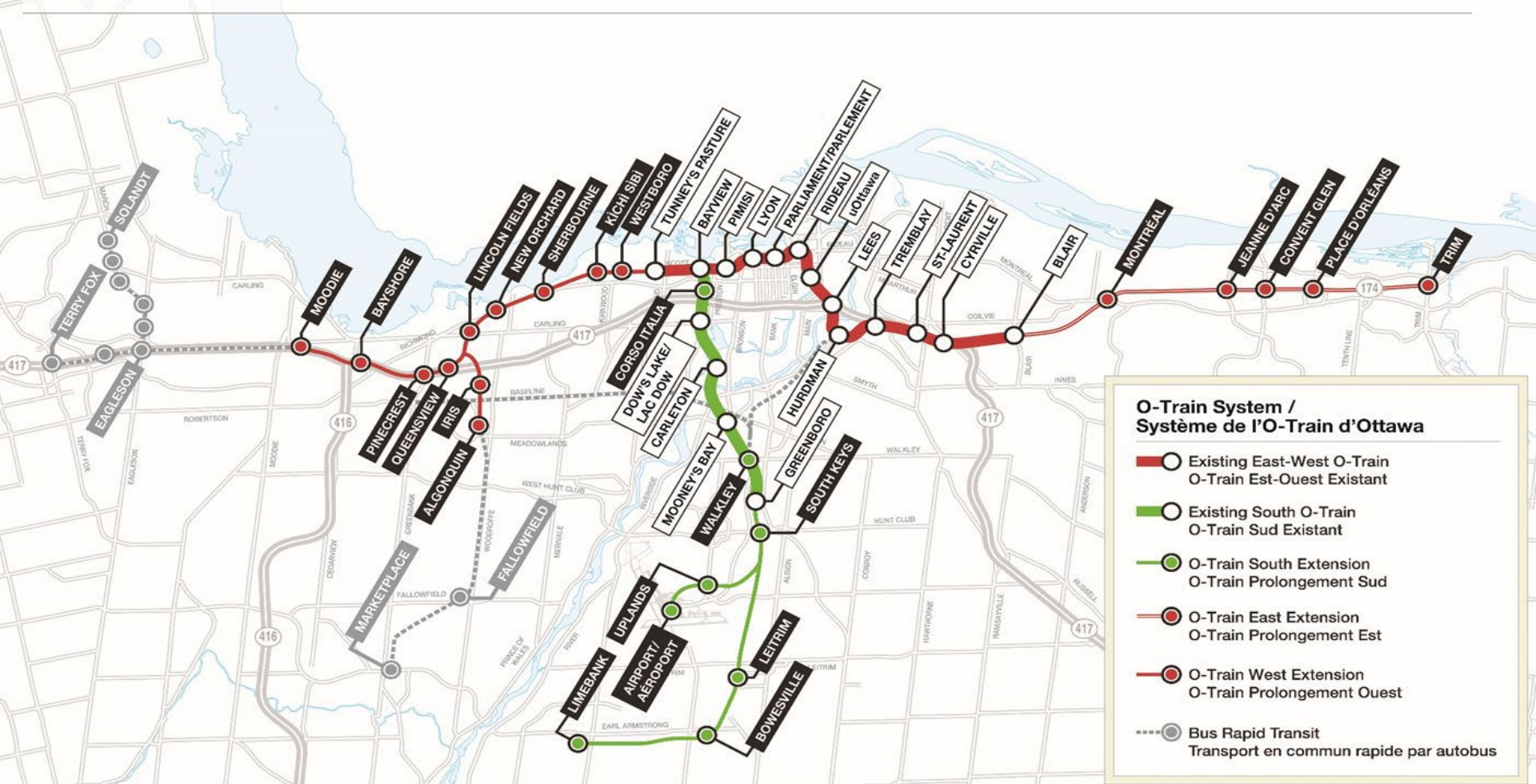


# Project Presentation Unitarian House

September 14, 2022





# Cut and Cover Tunnel

Parkway & Byron Tunnels



# Cut and Cover Tunnel

- The 3-kilometre Parkway/Byron Tunnel runs from Kichi Sibi Station to north of Lincoln Fields Station underneath the Sir John A. Macdonald Parkway and Byron Linear Park.
- Tunneling activities began on the Stage 2 Light Rail Transit (LRT) West Extension in September 2020.
- Concrete pouring began at New Orchard Station in June 2021. The first section of tunnel roof was poured in June 2022.
- **To be completed in 2024.**

# Rochester Field Parkway Tunnel



# SJAM Eastbound Parkway Tunnel



# 727 Richmond Road Parkway Tunnel



# 747 Richmond Road Parkway Tunnel









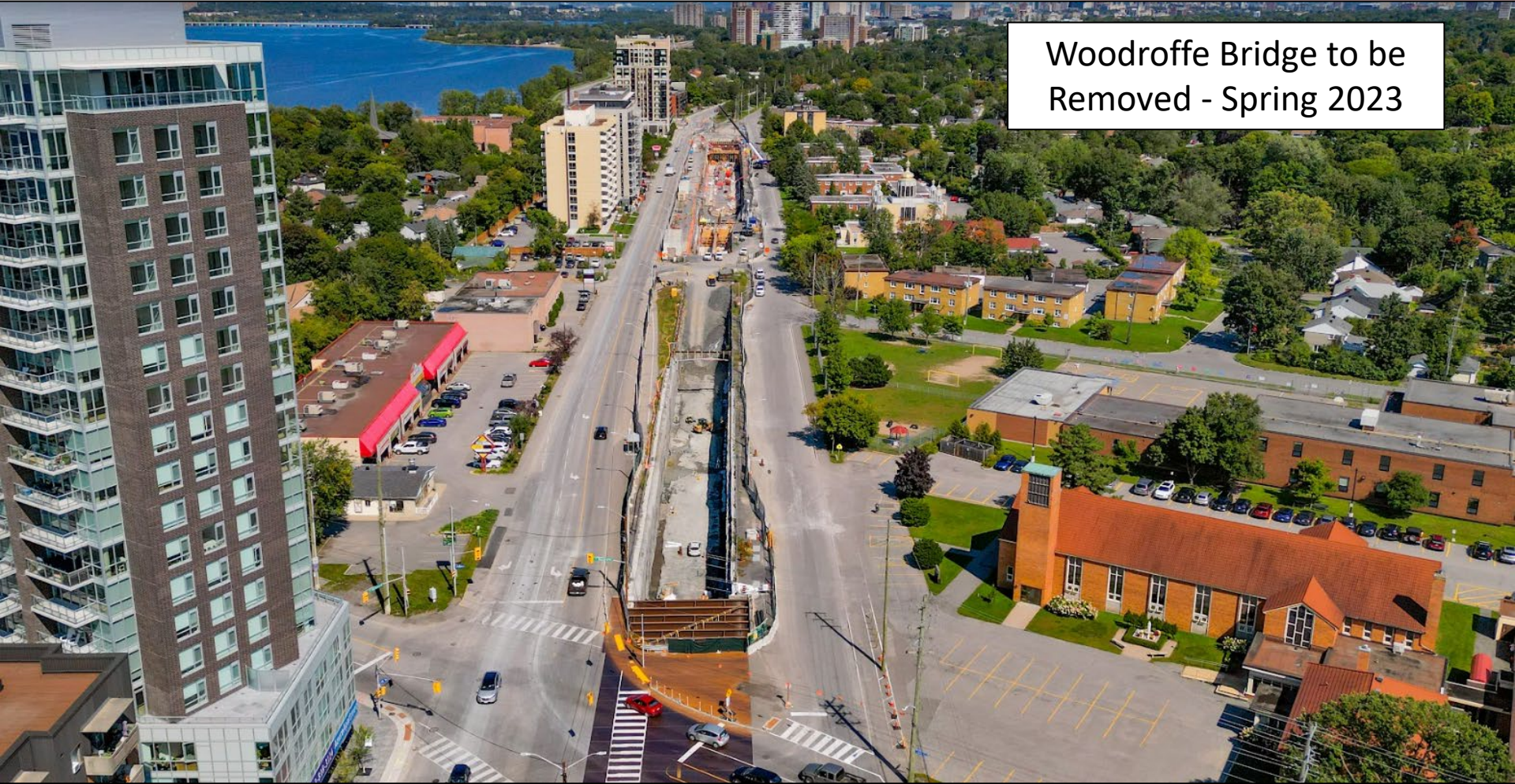
# Sherbourne Station Byron Tunnel





# Our Lady of Fatima Byron Tunnel

Woodroffe Bridge to be  
Removed - Spring 2023



# Detours & Connectivity

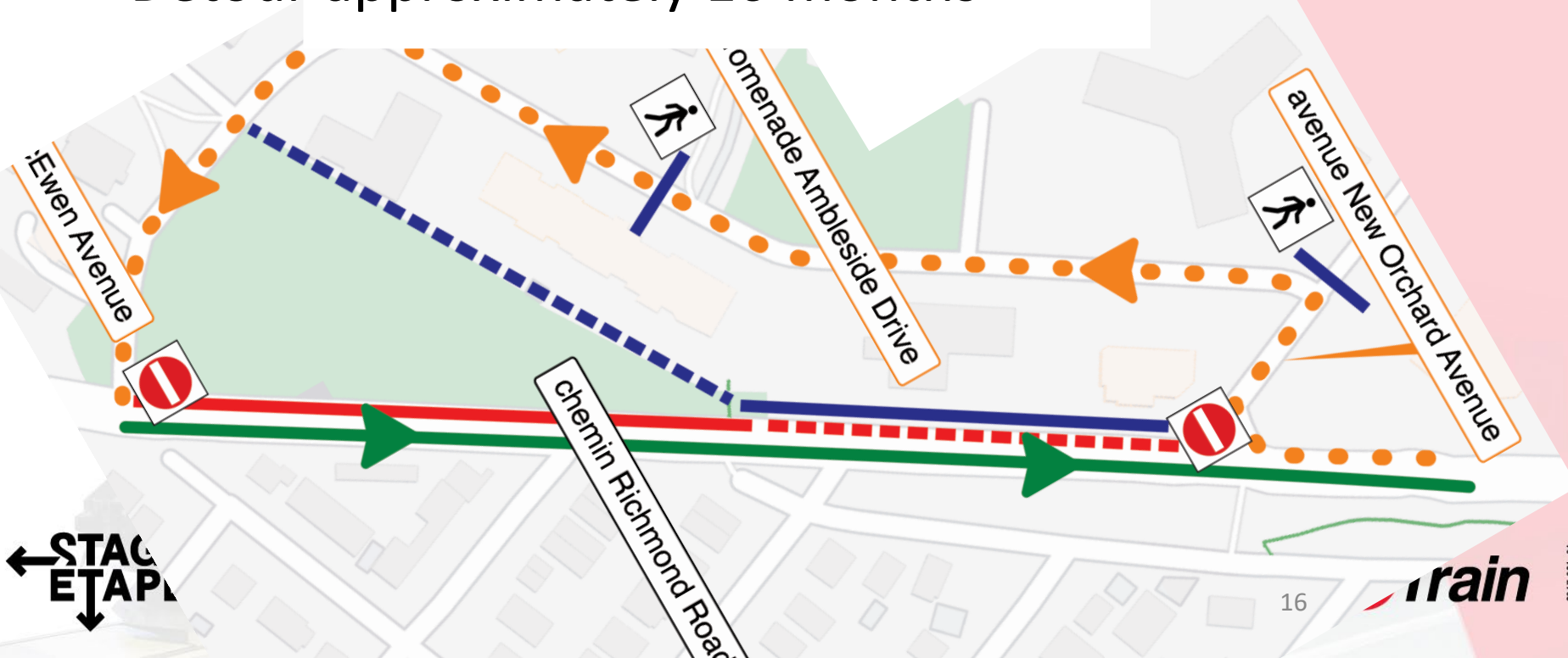


# Scott Street Detour

- Scott Street Detour was implemented on June 14, 2022 and will be in effect until Stage 2 begins Revenue Service
- Buses are now using Scott Street west of Tunney's Pasture. Once past Churchill, buses travel on a temporary bus only extension connecting to SJAM Parkway
- Once completed, Stage 2 will remove 500 000 bus trips annually from SJAM Parkway

# Ambleside Detour

- September 11, 2022 westbound Richmond Road was detoured to New Orchard, Ambleside then McEwen before resuming on Richmond Road
- Eastbound traffic is not be affected
- Detour approximately 16 months

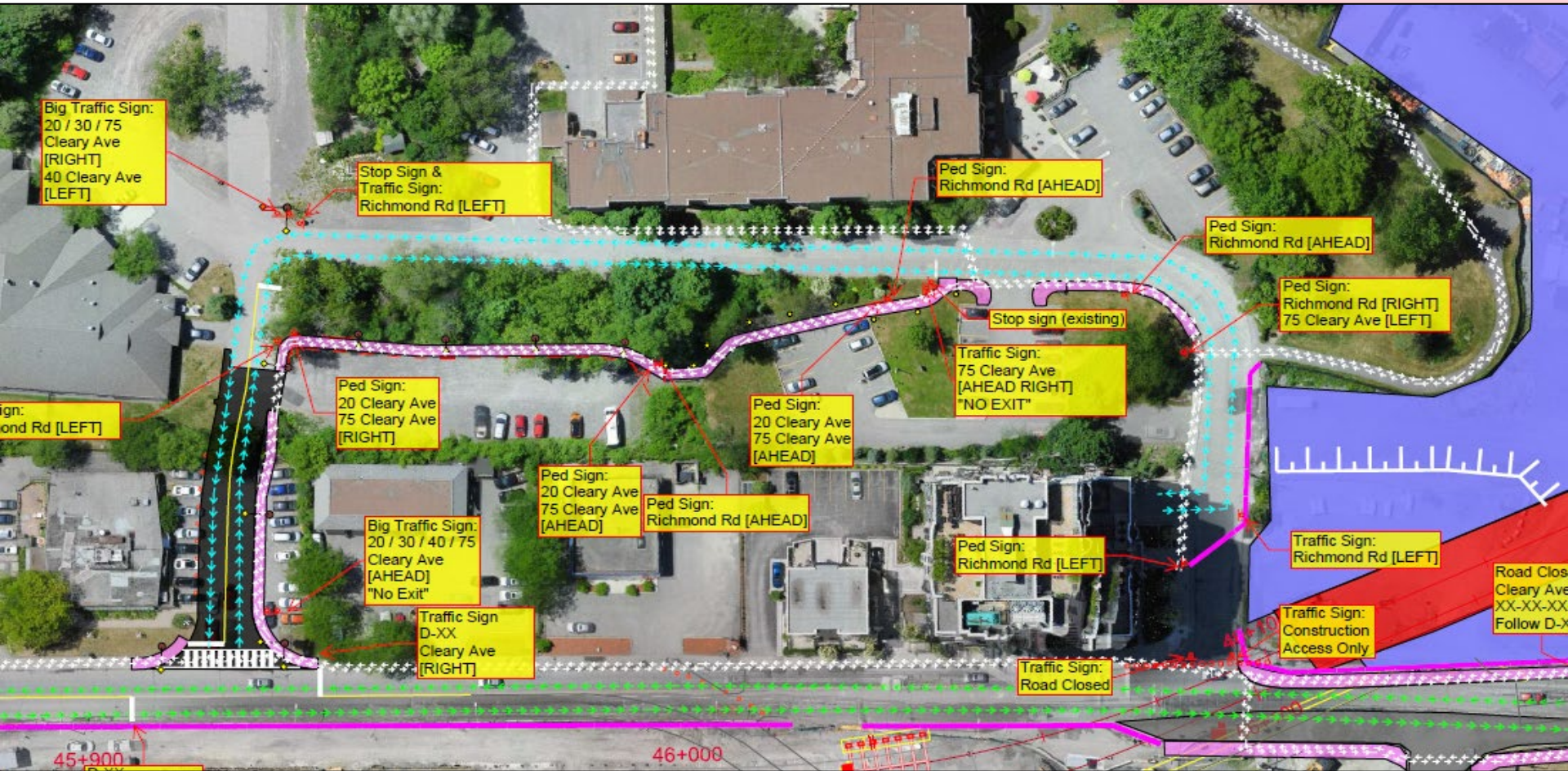




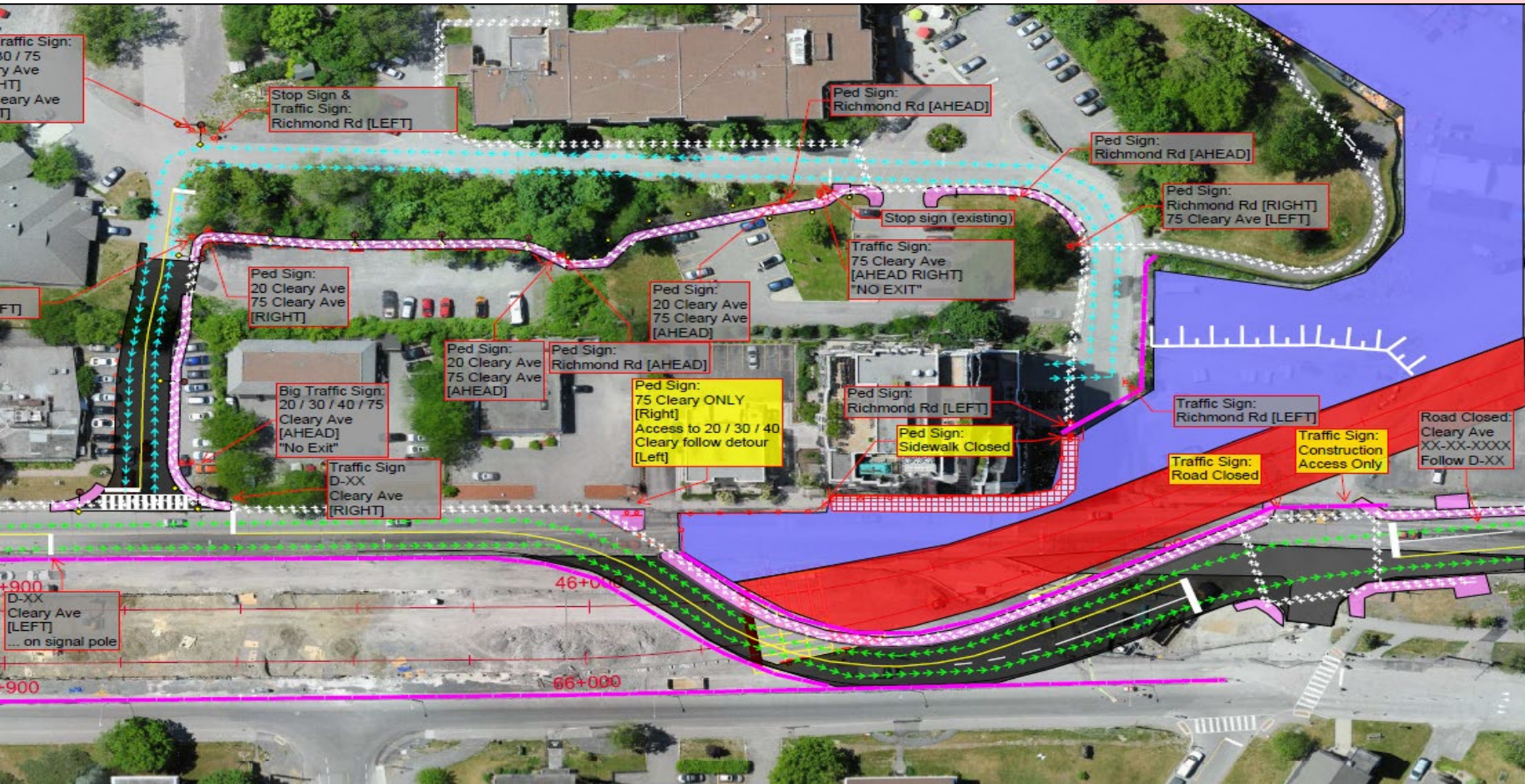
# Cleary Road Detour and Richmond Road Detour

- Construction of the proposed Cleary Detour to begin shortly
  - Once complete Detour to begin operation (end October)
- Construction of the proposed Richmond Detour to begin in October
  - scheduled for early November (for 2 years)
- Richmond and Cleary reinstatement - Fall 2024.

# Proposed Cleary Avenue Detour



# Proposed Richmond Road Detour



# Final State

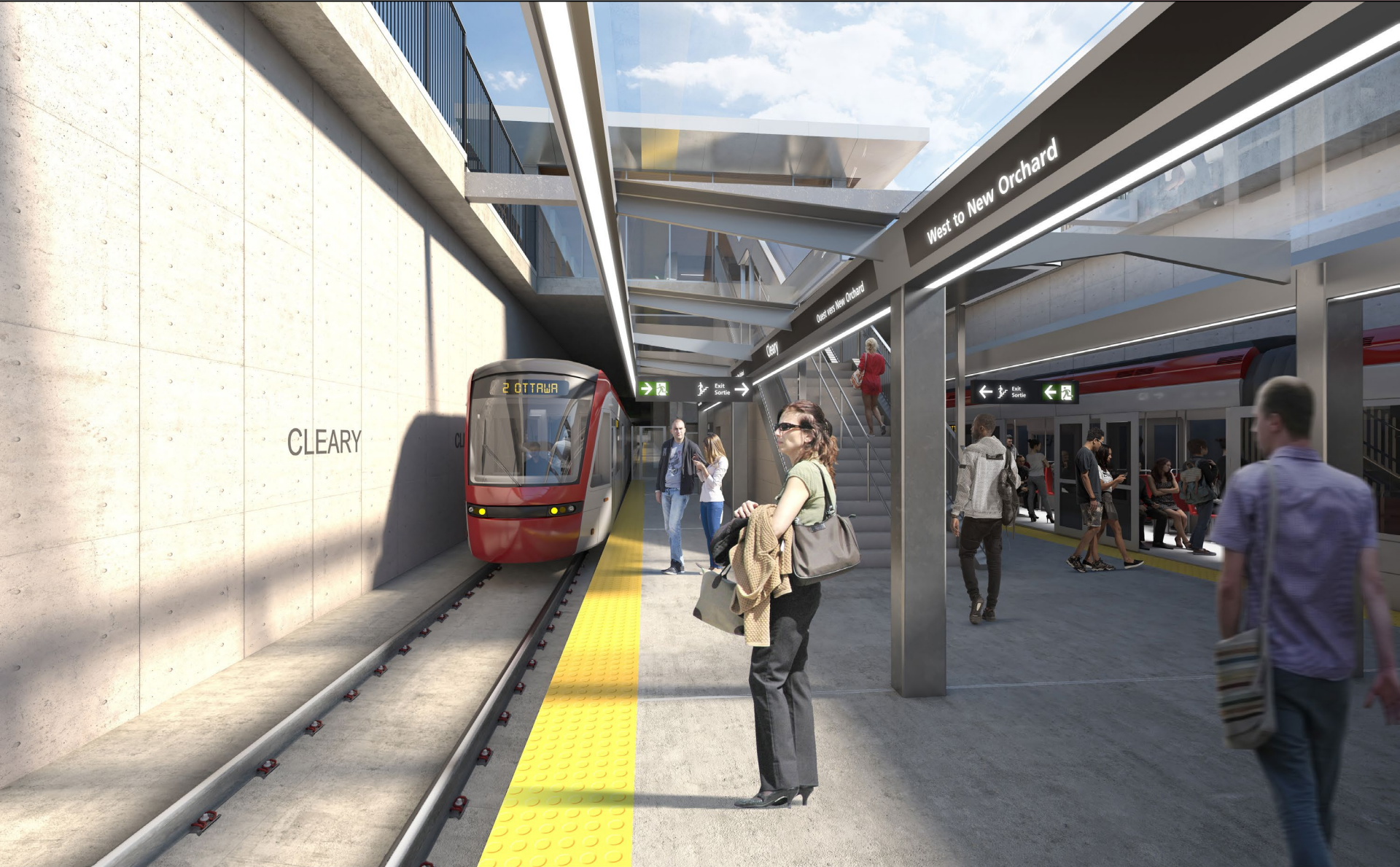


# Sherbourne Station

- Fully Excavated
- Invert Slab and Wall Pours
- Station Completion 2024



# Sherbourne Station Platform Level





# Green Roof Sherbourne Station

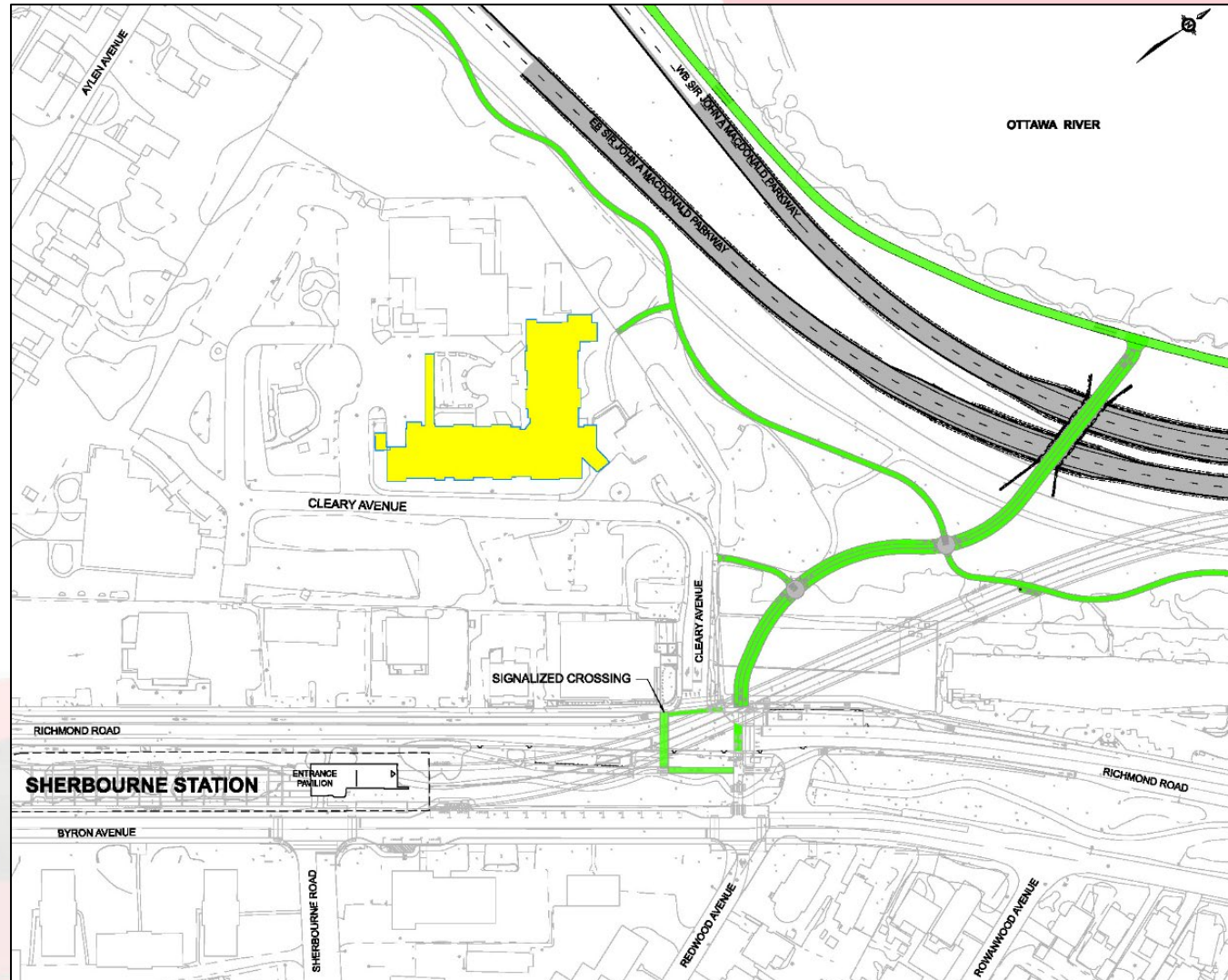






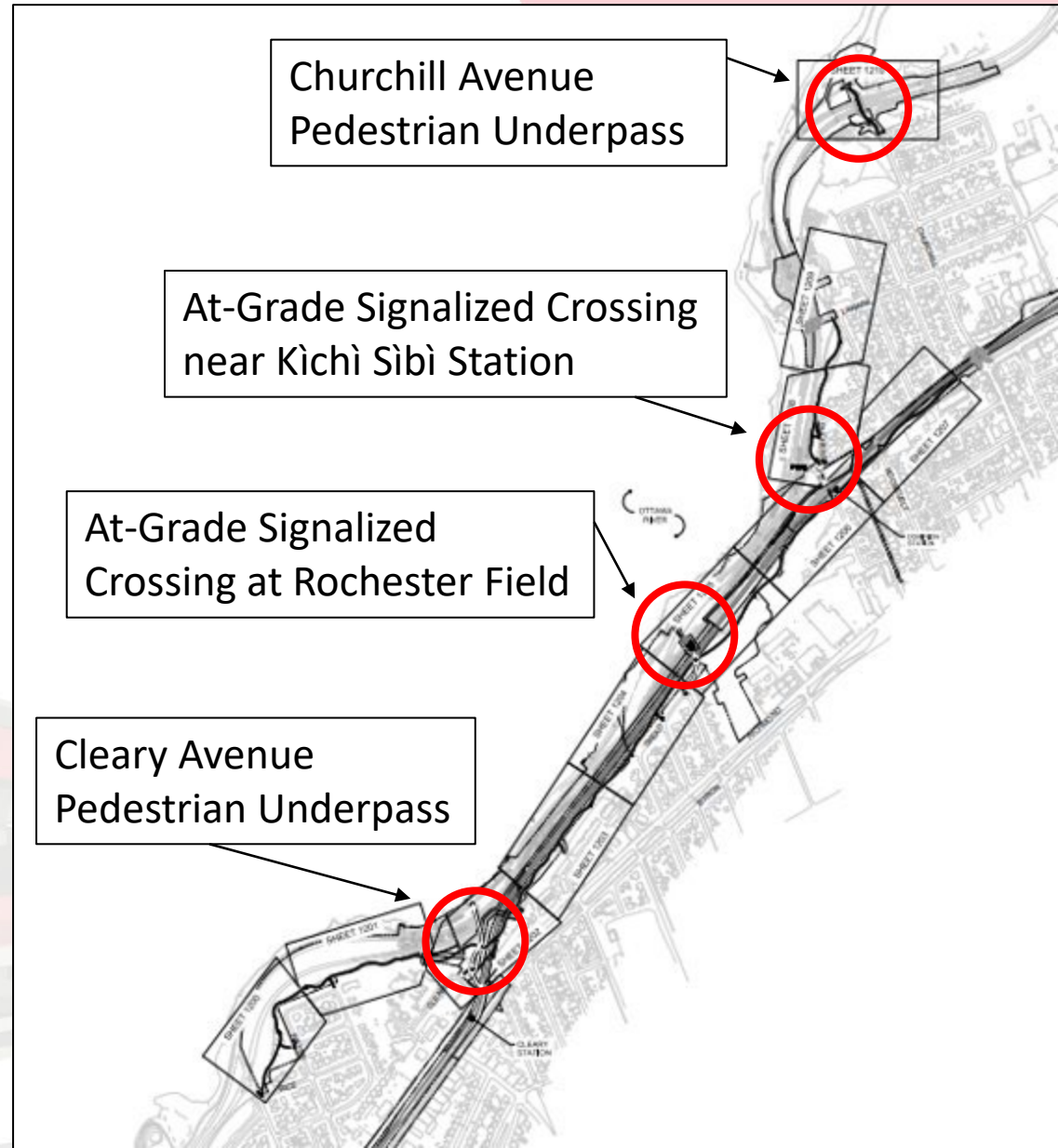
# Pathways & Connectivity

- Additional MUPs following construction will increase connectivity around the Unitarian House
- Including:
  - Signalized crossing of Richmond Rd
  - Pedestrian Underpass
  - Connections to Unitarian House and Cleary Avenue



The Stage 2 Project is enhancing connectivity in the area through the introduction of 4 new crossings of the Sir John A Macdonald Parkway at:

1. Pedestrian Underpass at Churchill Avenue
2. Signalized Crossing near Kìchì Sìbì Station
3. Signalized Crossing at Rochester Field
4. Pedestrian Underpass at Cleary Avenue





- Stage 2 is committed to providing:
  - Rapid response to public inquiries
  - Proactive communications including newsletters, online articles, video, social media updates, public notices
  - Providing dedicated presentations to affected groups

## Stakeholder Relations

Meghan Alexander [meghan.alexander@ottawa.ca](mailto:meghan.alexander@ottawa.ca)

Damon Berlin [damon.berlin@ottawa.ca](mailto:damon.berlin@ottawa.ca)

[ottawa.ca/Stage2](http://ottawa.ca/Stage2) - to sign up for e-newsletter